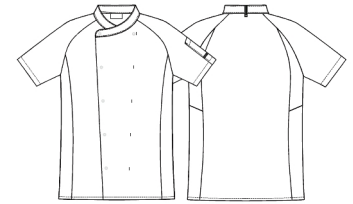


Date: 22-10-2024

23500-4100-0-0-101

## Unisex chef/waiters jacket

**KENTAUR**<sup>®</sup>  
Work Wear of Denmark



- Simple and light design
- Collar strap for bib apron
- Bias under sleeves, which makes it stretchable
- Short sleeves
- Divided pen pocket on left sleeve

**Quality:** 50/50% CO/PES, 210 g/m<sup>2</sup>

**Colour:** white 101

**Construction:** 2X1 Twill

**Size:** XXS-6XL



### Washing instructions

Can be washed according to ISO15797. The garments should always be washed before use. Wash before use, by recommended temperature.

To avoid creases the machine should not be filled more than 2/3. Pressbuttons should be open.

Measurement tolerance +/- 1 cm. Expected measurements after approx. 3 times wash. All measurements are in cm.

|                            |   | 2XS  | XS    | S     | M     | L     | XL    | 2XL   | 3XL   | 4XL   | 5XL   | 6XL   |
|----------------------------|---|------|-------|-------|-------|-------|-------|-------|-------|-------|-------|-------|
| Chest                      | A | 89,5 | 97,5  | 105,5 | 113,5 | 121,5 | 129,5 | 137,5 | 145,5 | 153,5 | 161,5 | 169,5 |
| Bottom                     | B | 95,5 | 103,5 | 111,5 | 119,5 | 127,5 | 135,5 | 143,5 | 151,5 | 159,5 | 167,5 | 175,5 |
| Shoulder and sleeve length | C | 40,5 | 42    | 44    | 45,5  | 47    | 48,5  | 50    | 51,5  | 53    | 53    | 53    |
| Backlength                 | E | 66   | 69    | 72    | 75    | 79    | 80    | 81    | 82    | 83    | 83    | 83    |