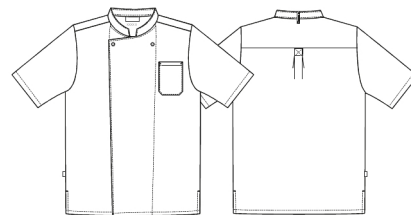


Date: 11-12-2024

2360-101-0-0-101

## Unisex chef/waiters jacket

**KENTAUR**<sup>®</sup>  
Work Wear of Denmark



- Style 2360 is large in size, see measurement chart
- 1 chest pocket
- Collar strap for bib apron
- Side slits

**Quality:** 65/35% PES/CO, 245 g/m<sup>2</sup>

**Colour:** white 101

**Construction:** 2X1 Twill

**Size:** 2XS-3XL



### Washing instructions

Can be washed according to ISO15797. The garments should always be washed before use. Wash before use, by recommended temperature.

Pressbuttons should be open. To avoid creases the machine should not be filled more than 2/3.

Measurement tolerance +/- 1 cm. Expected measurements after approx. 3 times wash. All measurements are in cm.

		2XS	XS	S	M	L	XL	2XL	3XL
Chest	A	106,5	114,5	122,5	130,5	138,5	146,5	154,5	162,5
Bottom	B	102,5	110,5	118,5	126,5	134,5	142,5	150,5	158,5
Sleevelength	C	28,5	29,5	30,5	31,5	32	33	33,5	34,5
Backlength	E	72	73	74	75,5	77,5	79,5	81,5	83,5