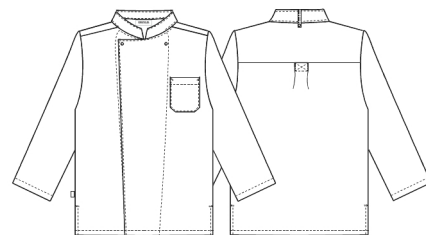


Date: 11-12-2024

2362-101-0-0-101

Unisex chef/waiters jacket

KENTAUR[®]
Work Wear of Denmark



- Style 2362 is large in size, see measurement chart
- 1 chest pocket
- Collar strap for bib apron
- Side slits

Quality: 65/35% PES/CO, 245 g/m²

Colour: white 101

Construction: 2X1 Twill

Size: 2XS-3XL



Washing instructions

Can be washed according to ISO15797. The garments should always be washed before use. Wash before use, by recommended temperature.

Pressbuttons should be open. To avoid creases the machine should not be filled more than 2/3.

Measurement tolerance +/- 1 cm. All measurements are in cm. Expected measurements after approx. 3 times wash.

| | | 2XS | XS | S | M | L | XL | 2XL | 3XL |
|--------------|---|-------|-------|-------|-------|-------|-------|-------|-------|
| Chest | A | 106,5 | 114,5 | 122,5 | 130,5 | 138,5 | 146,5 | 154,5 | 162,5 |
| Bottom | B | 102,5 | 110,5 | 118,5 | 126,5 | 134,5 | 142,5 | 150,5 | 158,5 |
| Sleevelength | C | 54 | 55 | 56 | 57 | 57,5 | 58,5 | 59 | 60 |
| Backlength | E | 72 | 73 | 74 | 75,5 | 77,5 | 79,5 | 81,5 | 83,5 |