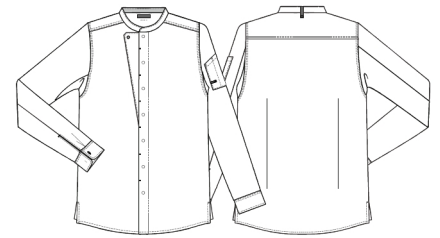


Date: 11-12-2024

23515-105-0-0-101

## Chef/service jacket I/s

**KENTAUR**<sup>®</sup>  
Work Wear of Denmark



- Our Choice
- Recycled polyester from PET bottles
- Modern and optimal fit
- Collar strap for bib apron
- Sleeves with practical elastic band in cuff to easily Pull-Up
- Sleeve cut which does not lift up the whole jacket during movement
- Divided pen pocket on left sleeve
- Side slits

**Quality:** 65/35% rPES/CO, 175 g/m<sup>2</sup>

**Colour:** white 101

**Construction:** 2X1 Twill

**Size:** XS-4XL



### Washing instructions

Can be washed according to ISO15797. The garments should always be washed before use. Wash before use, by recommended temperature.

Pressbuttons should be open. To avoid creases the machine should not be filled more than 2/3.

Measurement tolerance +/- 1 cm. All measurements are in cm. Expected measurements after approx. 3 times wash.

		2XS	XS	S	M	L	XL	2XL	3XL	4XL	5XL	6XL
Chest	A	89	97	105	113	121	129	137	145	153	161	169
Bottom	C	91	99	107	115	123	131	139	147	155	163	171
Backlength	E	73	74	75	76	77	78	79	80	81	82	83
Sleevelength incl cuff	F	62,2	62,8	63,4	64	64,6	65,2	65,8	66,4	67	67,6	68,2