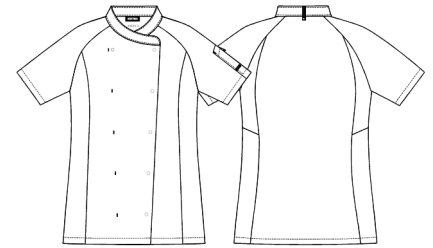


Date: 11-12-2024

13500-4100-0-0-101

## Ladies chef/waiters jacket

**KENTAUR**  
Work Wear of Denmark



- Simple and light design
- Collar strap for bib apron
- Bias under sleeves, which makes it stretchable
- Short sleeves
- Divided pen pocket on left sleeve

**Quality:** 50/50% CO/PES, 210 g/m<sup>2</sup>

**Colour:** white 101

**Construction:** 2X1 Twill

**Size:** 2XS-4XL



### Washing instructions

Can be washed according to ISO15797. The garments should always be washed before use. Wash before use, by recommended temperature.

To avoid creases the machine should not be filled more than 2/3.

Measurement tolerance +/- 1 cm. All measurements are in cm. Expected measurements after approx. 3 times wash.

		2XS	XS	S	M	L	XL	2XL	3XL	4XL
Chest	A	85	93	101	109	117	129	141,5	154,5	167
Bottom	B	94	102	110	118	126	138	150	162	174
Shoulder and sleeve length, after wash	C	35,5	37,5	40	42	43,5	45,5	48,5	51	54
Backlength, after wash	E	65	66	67	68	69	70	71	72	73