

Date: 11-12-2024

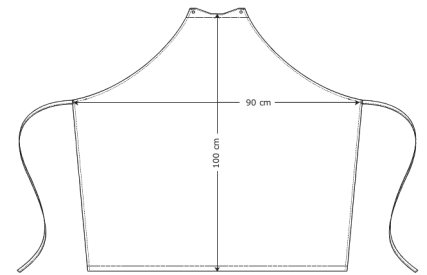
30536-2-0-0-700

Snap-on apron

KENTAUR[®]
Work Wear of Denmark



- Sewn bands
- Press buttons for attachment of the upper part
- Straps for hanging up in a steamer
- W: 90 cm x H: 100 cm



Quality: 65/35% PES/CO, 245 g/m²

Colour: black 700

Construction: 2X1 Twill

Size: one size



Washing instructions

Can be washed according to ISO15797. The garments should always be washed before use. Wash before use, by recommended temperature. Colour loss can occur with the use of disinfectants.

To avoid creases the machine should not be filled more than 2/3.

Measurement tolerance +/- 1 cm. All measurements are in cm. Expected measurements after approx. 3 times wash.

		UNI
Length center front after wash	A	100
Waist width	B	90
Bottom width	C	80