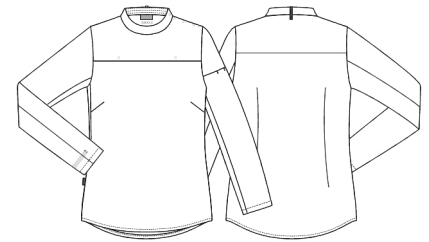


Date: 11-12-2024

15235-103-0-0-103

Ladies popover shirt

KENTAUR[®]
Work Wear of Denmark



- Added interlining which can be washed and dried according to ISO 15797
- Form fitted
- Shoulder closure with hidden press buttons
- Collar strap for bib apron
- Hidden press buttons for Snap-On apron
- Long sleeves with Pull-Up function

Quality: 65/35% PES/CO, 150 g/m2

Colour: white 103

Construction: Plain

Size: XS-4XL



Washing instructions

Can be washed according to ISO15797. The garments should always be washed before use. Wash before use, by recommended temperature.

To avoid creases the machine should not be filled more than 2/3. Pressbuttons should be open.

Measurement tolerance +/- 1 cm. All measurements are in cm. Expected measurements after approx. 3 times wash.

		XS	S	M	L	XL	2XL	3XL	4XL
Chest width	A	92,5	100,5	108,5	116,5	128,5	140,5	152,5	164,5
Bottom width	C	101	109	117	125	137	149	161	173
Back length	E	65	69	70	71	72	73	74	75
Sleeve length	F	58,8	59,4	60	60,6	61,2	61,8	62,4	63