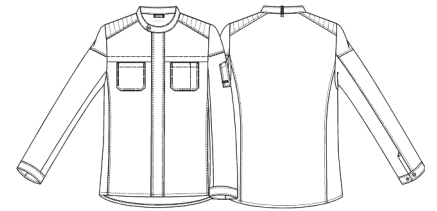


Date: 11-12-2024

23531-3086-0-0-639

## Biker chef-/service jacket

**KENTAUR**<sup>®</sup>  
Work Wear of Denmark



- Our Choice
- Recycled polyester from PET bottles
- Modern fit
- Hidden press buttons
- Hidden press buttons for Snap-On apron
- Collar strap for bib apron
- Divided pen pocket on left sleeve
- Cuffs

**Quality:** 65/35% rPES/CO, 150 g/m2

**Colour:** dark ocean 639

**Construction:** 3X1 Twill

**Size:** XS-4XL



### Washing instructions

Colour loss can occur with the use of disinfectants. Can be washed according to ISO15797. The garments should always be washed before use. Wash before use, by recommended temperature.

To avoid creases the machine should not be filled more than 2/3. Pressbuttons should be open.

Measurement tolerance +/- 1 cm. All measurements are in cm. Expected measurements after approx. 3 times wash.

		XS	S	M	L	XL	2XL	3XL	4XL
Chest	A	94	102	110	118	126	134	142	152
Waist	B	86	94	102	110	118	126	134	144
Bottom	C	98	106	114	122	130	138	146	156
Backlength, AFTER wash	E	73	74	75	76	77	78	79	80
Sleevelength, AFTER wash	F	63	64	65	66	67	68	69	70