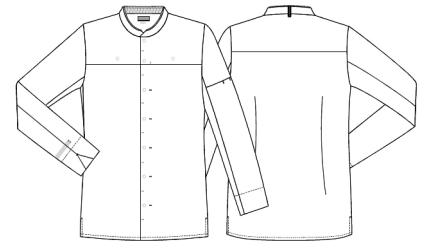
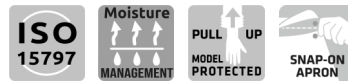


Gourmet jacket with TENCEL™ Ly



- Our Choice
- TENCEL™ Lyocell
- Simple and light design
- Collar with moisture-management mesh
- Pen pocket on left sleeve
- Hidden press buttons for Snap-On apron
- Collar strap for bib apron
- Front with bartacks for easy access to press buttons
- Hidden press buttons
- Long sleeves with Pull-Up function

Quality: 50/50% CLY/PES, 215 g/m2
Colour: white 101
Construction: 2X1 Twill
Size: XS-4XL



Washing instructions

Can be washed according to ISO15797. The garments should always be washed before use. Wash before use, by recommended temperature.

To avoid creases the machine should not be filled more than 2/3. Info about the washing of Tencel can be found on the website

Measurement tolerance +/- 1 cm. All measurements are in cm. Expected measurements after approx. 3 times wash.

		XS	S	M	L	XL	2XL	3XL	4XL	5XL
Chest width	A	97	105	113	121	129	137	145	155	161
Bottom width	C	99,5	107,5	115,5	123,5	131,5	139,5	147,5	157,5	163,5
Back length	E	74,5	75,5	76,5	77,5	78,5	79,5	80,5	81,5	82,5
Sleeve length	F	62,3	62,9	63,5	64,1	64,7	65,3	65,9	66,5	67,1