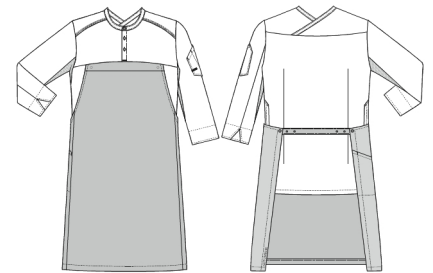
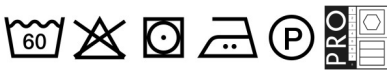
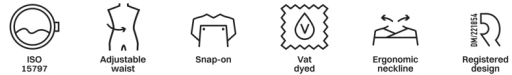


Hybrid chef jacket with TENCEL



- Hybrid jacket with integrated apron
- Ergonomic neck line "cross neck"
- Flatlock stitching
- Hidden press buttons for Snap-On apron
- Pen pocket on the left sleeve
- 3/4-length sleeves
- Breathable jersey under the sleeves providing greater comfort and freedom of movement
- Adjustable waist

**Quality:** 50/50% CLY/PES, 215/175 g/m2  
**Colour:** white/dark rock 1043  
**Construction:** 2/1 Twill  
**Size:** XS-4XL



**Washing instructions**

Can be washed according to ISO15797. The garments should always be washed before use. Wash before use, by recommended temperature. Colour loss can occur with the use of disinfectants.

To avoid creases the machine should not be filled more than 2/3. Info about the washing of Tencel can be found on the website Pressbuttons should be open.

Measurement tolerance +/- 1 cm. All measurements are in cm. Expected measurements after approx. 3 times wash.

		XS	S	M	L	XL	2XL	3XL	4XL
Chest	A	92	100	108	116	124	132	140	150
Waist	B	90	98	106	114	122	130	138	148
Hip	C	96	104	112	119	127	135	143	151
Shoulder to Shoulder	D	43	45	47	49	51	53	55	57
Backlength	E	78	79	80	81	82	83	84	85
Sleeve length	F	35	35,5	36	36,5	37,5	38	38,5	39