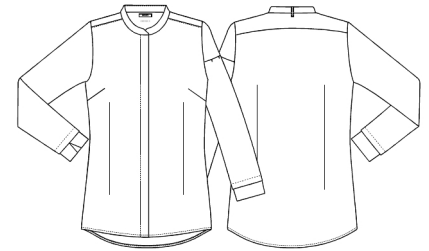


Oxford ladies shirt 7/8 sleeve



- Our Choice
- Form-fitting with dart
- Chest dart
- Collar strap for bib apron
- Pen pocket on left sleeve
- 1 nylon button at the neck
- Hidden press buttons
- Sleeve cut which does not lift up the shirt during movement

Quality: 60/40% CO/PES, 151 g/m2

Colour: white 101

Construction: Oxford

Size: XS-4XL



Washing instructions

Can be washed according to ISO15797. The garments should always be washed before use. Wash before use, by recommended temperature.

To avoid creases the machine should not be filled more than 2/3.

Measurement tolerance +/- 1 cm. All measurements are in cm. Expected measurements after approx. 3 times wash.

		XS	S	M	L	XL	2XL	3XL	4XL
Chest	A	92	100	108	116	128,5	141	153,5	166
Chest width 10 cm below armhole	AA	92	100	108	116	128,5	141	153,5	166
Waist	B	82,5	90,5	98,5	106,5	118,5	130,5	142,5	154,5
Bottom	C	97	105	113	121	133	145	157	169
Shoulder to shoulder	D	37	39	41	43	45	47	49	51
C.B. length AFTER WASH	E	62,5	63,5	64,5	65,5	66,5	67,5	68,5	69,5
Sleeve length AFTER WASH	F	48,4	49	49,6	50,2	50,8	51,4	52	52,6
Collar around at neckline - closed	H	39,5	40,5	41,5	42,5	44,1	45,6	47,4	49