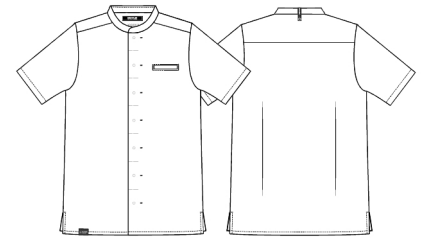


Date: 11-12-2024

25284-936-0-0-101

## Chef jacket with TENCEL™ x REF

**KENTAUR®**  
Work Wear of Denmark



- Our Choice
- TENCEL™ Lyocell x REFIBRA™
- Recycled polyester from PET bottles
- The fabric is light, soft and comfortable - wash after wash
- Welt chest pocket
- Front with bartacks for easy access to press buttons
- Hidden press buttons
- Collar strap for bib apron
- Side slits

**Quality:** 50/50% CLY/rPES, 235 g/m<sup>2</sup>

**Colour:** white 101

**Construction:** 2X1 Twill

**Size:** XS-4XL



### Washing instructions

Can be washed according to ISO15797. The garments should always be washed before use. Wash before use, by recommended temperature.

To avoid creases the machine should not be filled more than 2/3. Pressbuttons should be open.

Measurement tolerance +/- 1 cm. All measurements are in cm. Expected measurements after approx. 3 times wash.

|                      |   | XS   | S     | M     | L     | XL    | 2XL   | 3XL   | 4XL   |
|----------------------|---|------|-------|-------|-------|-------|-------|-------|-------|
| Chest                | A | 98   | 104   | 110   | 116   | 124   | 132   | 140   | 148   |
| Waist                | B | 87   | 93    | 99    | 105   | 113   | 121   | 129   | 137   |
| Bottom               | C | 95,5 | 101,5 | 107,5 | 113,5 | 121,5 | 129,5 | 137,5 | 145,5 |
| Backlength           | D | 74,5 | 75,5  | 76,5  | 77,5  | 78,5  | 79,5  | 80,5  | 81,5  |
| Sleevelength         | E | 25   | 25,5  | 26    | 26,5  | 26,5  | 26,5  | 26,5  | 26,5  |
| Shoulder to shoulder | F | 42,4 | 45,2  | 48    | 50,8  | 53,6  | 56,4  | 59,2  | 62    |