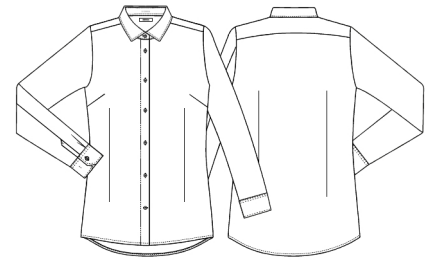


Date: 15-11-2024

15470-1406-0-0-101

Ladies shirt - modern fit

KENTAUR[®]
Work Wear of Denmark



- Our Choice
- Stretch quality
- Modern fit
- Form-fitting with dart
- Chest dart
- Closure with button and buttonhole
- Easy Pull-Up function
- Sleeve cut which does not lift up the shirt during movement

Quality: 49/48/3%CO/PES/EOL, 130 g/m2

Colour: white 101

Construction: Plain

Size: XS-4XL



Washing instructions

Can be washed according to ISO15797. The garments should always be washed before use. Wash before use, by recommended temperature.

To avoid creases the machine should not be filled more than 2/3.

Measurement tolerance +/- 2 cm. Expected measurements after approx. 3 times wash. All measurements are in cm.

		XS	S	M	L	XL	2XL	3XL	4XL
Chest	A	93	101	109	117	129	141	153	165
Waist	B	83	91	99	107	119	131	143	155
Bottom	C	96	104	112	120	132	144	156	168
Shoulder to shoulder	D	37	39	41	43	45	47	49	51
C.B. length AFTER WASH	E	66	67	68	69	70	71	72	73
Sleeve length AFTER WASH	F	60,2	61	61,5	62	62,6	63,2	63,8	64,6
Collar around, closed	H	36,4	37,5	38,5	39,5	41	42	44	46